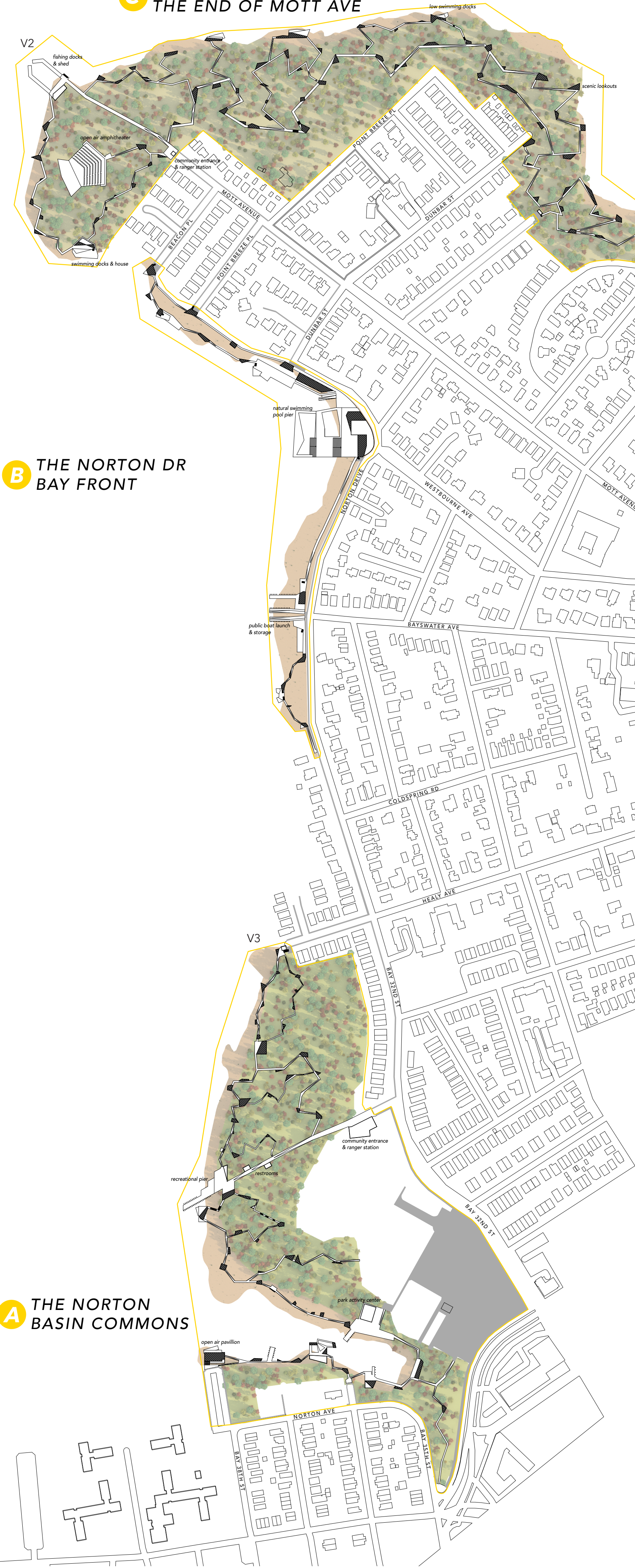


THE EAST BAYSIDE COMMONS

an activation of the existing green space from beach 38th street to the Nassau County line



C THE BOARDWALK AT THE END OF MOTT AVE

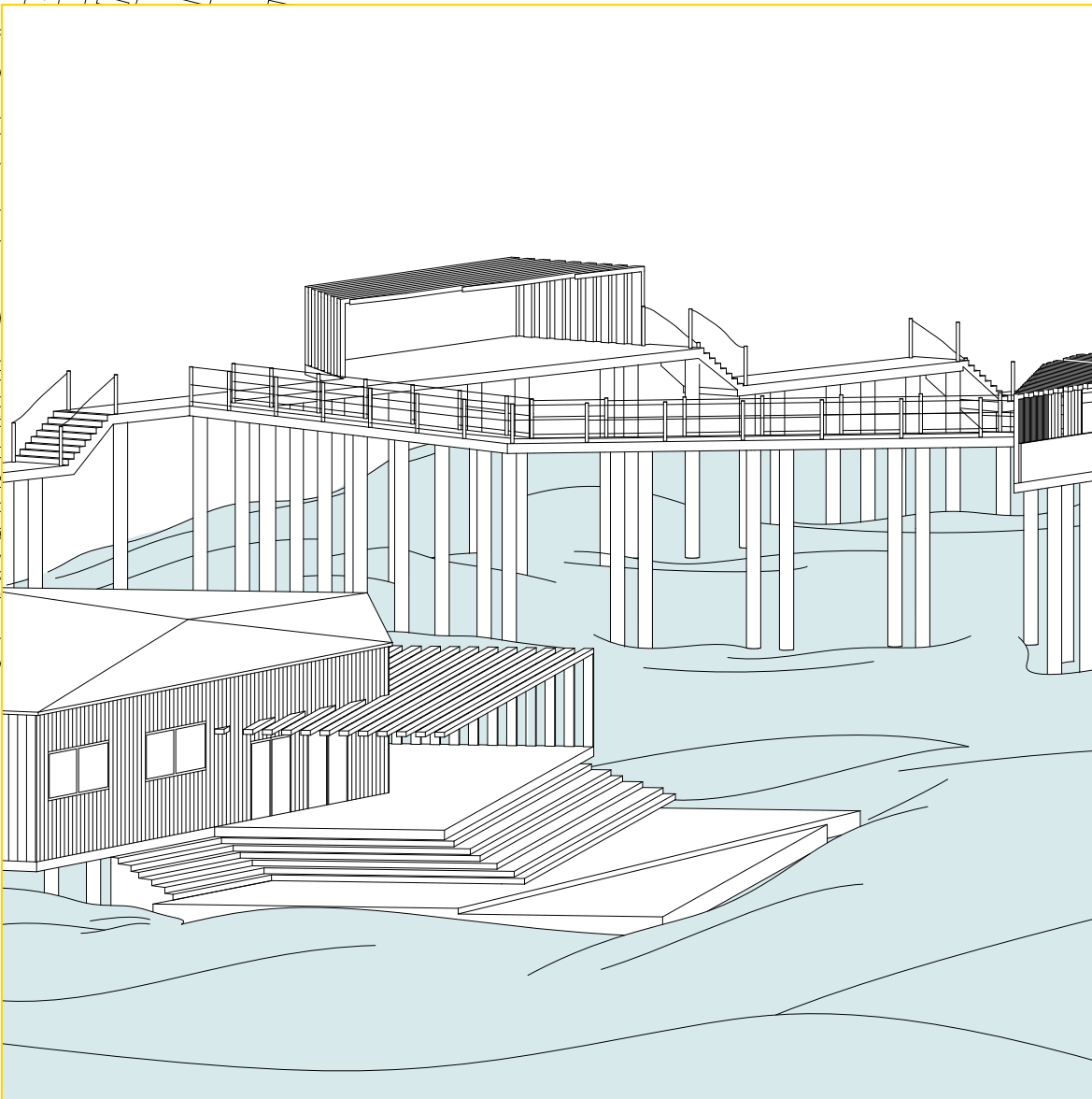


B THE NORTON DR BAY FRONT

A THE NORTON BASIN COMMONS

The East Bayside Commons proposes a resident-driven park network along the Far Rockaway waterfront, designed to connect naturally with local neighborhoods through accessible, intimate entrances. The park features thin, meandering boardwalks that encourage lingering, blending elevated views with direct water engagement to create a contemplative, bayside experience. Community amenities—including swimming docks, fishing sheds, public boat launches, and open-air pavilions—invite residents to shape their interactions with the bay, fostering a flexible and inclusive space for everyday life. With native vegetation and designated low-intervention zones, the park promotes ecological health and resilience, establishing a sustainable community framework rooted in connection to the waterfront.

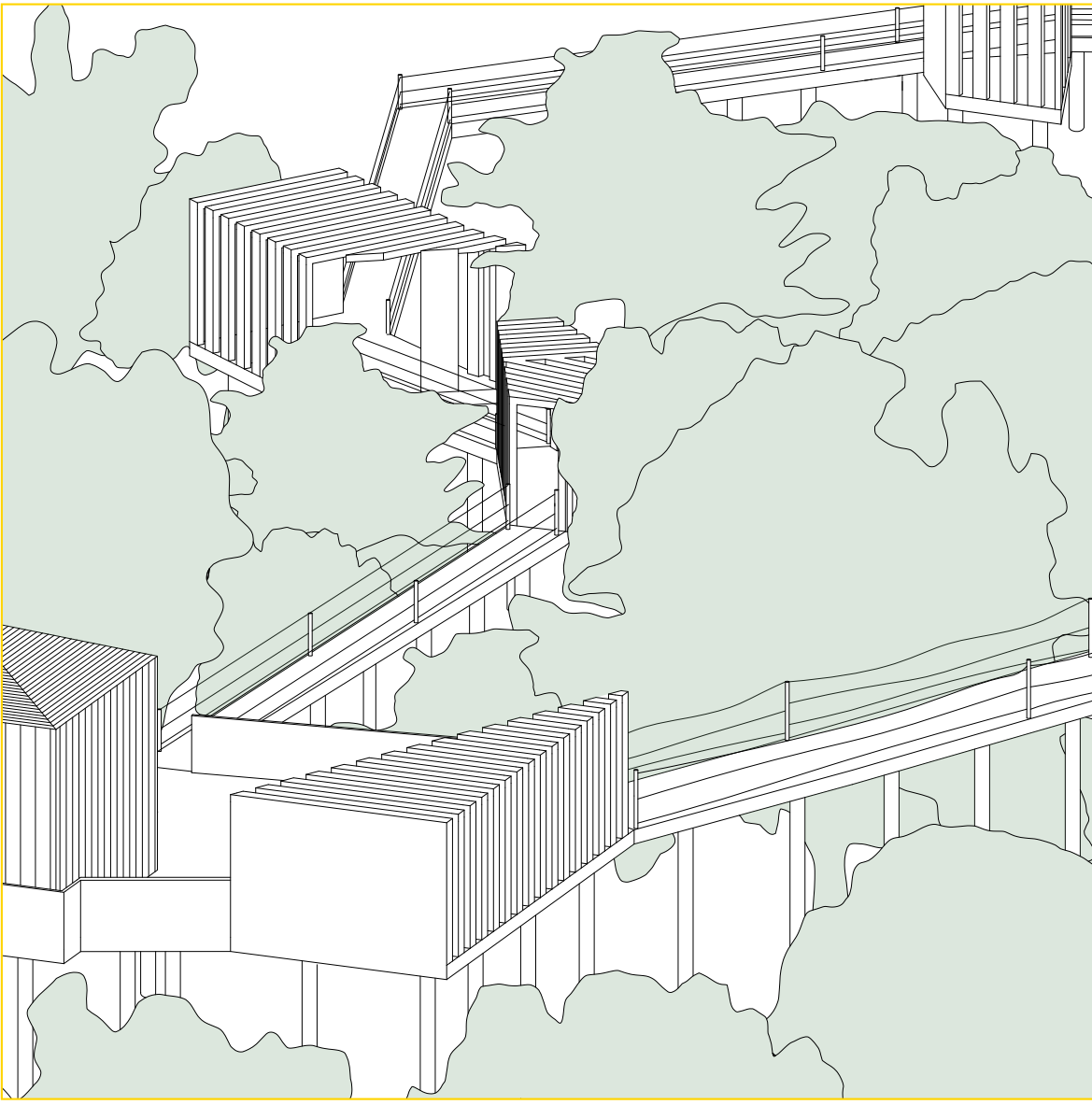
D THE PARK ON MOTT BASIN



V1: low swimming docks in the Park on Mott Basin



V2: fishing pier on the Boardwalk at the End of Mott Avenue



V3: pathway near Healy Avenue in the Norton Basin Commons